

RFD 77825 GBK



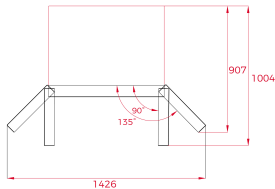
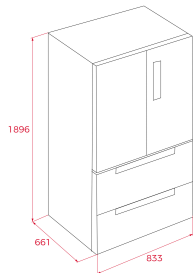
Motor
inverter



LED



LongLife
No Frost



TEKA

Freestanding French Door Refrigerator with Inverter Motor and Antibacterial System

Inverter motor

IonClean technology to neutralize bacteria and unpleasant odors

LongLife No Frost system

Chrome finishes

FlexZone drawer

Fresh Box drawer

Extra-large Fresh Box XXL drawer

Metal Cooling column

Fast cooling and freezing

LED interior lighting

Three height-adjustable safety glass shelves

Telescopic soft-close pull-out drawer with one deep tray and two special compartments for meat and fish

Telescopic soft-close pull-out drawer with upper tray on telescopic rails

Fully removable freezer drawers for easy cleaning

Digital temperature display for fridge and freezer

Total capacity: 516 liters

External Dimension

↑ H 1896 mm

→ W 833 mm

↗ D 661 mm

